

# JOIN YOUR FRIENDS IN Florida

Manatees, mangroves, and more! A trip to Florida gives you an up-close and personal look at the adventurous side of scientific study. Work side by side with research scientists, get inspired by marine life, and have a blast making unforgettable memories with your friends.

## LEAP into science

This trip will provide endless opportunities for hands-on interaction with the science and natural wonders you may have only seen in your classroom. We call this LEAP—Learning through Exploration and Active Participation—and it creates the perfect balance of fun and education on every trip!



RAINBOW RIVER



HOMOSASSA SPRINGS



CRYSTAL SPRINGS PRESERVE



CLEARWATER MARINE AQUARIUM



SNORKEL WITH A MANATEE



BUSCH GARDENS AFRICAN SAFARI



ZOOTAMPA AT LOWRY PARK



CALADESI ISLAND



**SCAN**  
to see how much fun  
you'll have on our trip!

## Safety is our top priority

You're never alone when you travel with WorldStrides. Here are some of the ways we support our travelers:

### WorldAssist

specialized team available to assist traveling groups 24 hours a day

### Course Leaders

caring and dynamic individuals who are specially trained to guide your group throughout your trip and make learning come to life

### Motor Coach Drivers

with years of experience driving and working with student groups

### Student Name Tags

printed with WorldAssist's toll-free number

### Doctors on Call Program

an exclusive partnership with The George Washington University Department of Emergency Medicine that grants us access to doctors for consultations and treatment recommendations

### Night Chaperones

additional help to monitor hotel hallways overnight

## Tools to help pay for your trip

We offer several tools to help make these experiences possible for every student!

**Financial Assistance:** Over \$2.5 million in assistance is given out each year to families with annual adjusted gross incomes of \$85,000 or less

**Gift of Education:** An effective fundraising tool where 100% of the money raised goes to pay for your trip

**Payment Plans:** Spread out payments and set up auto-deductions to save time and money

Visit [worldstridesfundraising.com](https://worldstridesfundraising.com) for more details.

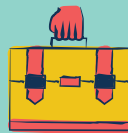
# Sign up today!

800-468-5899

[worldstrides.com/register](https://worldstrides.com/register)



Students who travel are **32% more likely to attend college**



Students who travel are **21% more likely to be employed full-time**



**86% of students who travel agree the trip made them a better world citizen**

According to a 2011 study organized by The Wagner Group

©WorldStrides 2021-WSD-280100