



WorldStrides®



Smithsonian

# Smithsonian University Travel Programs



2017-2018 Smithsonian University  
Travel Programs Catalog

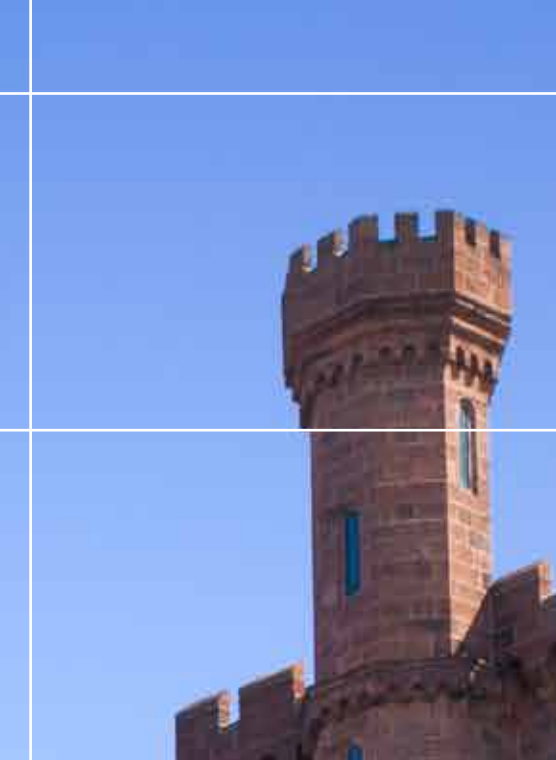
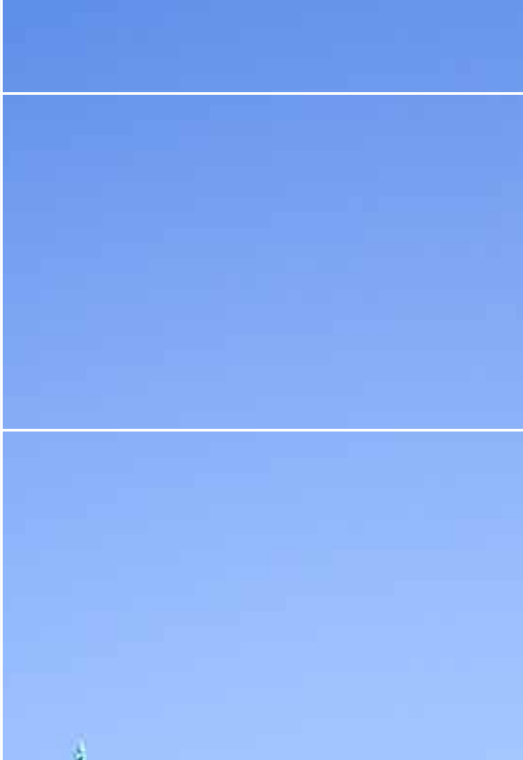
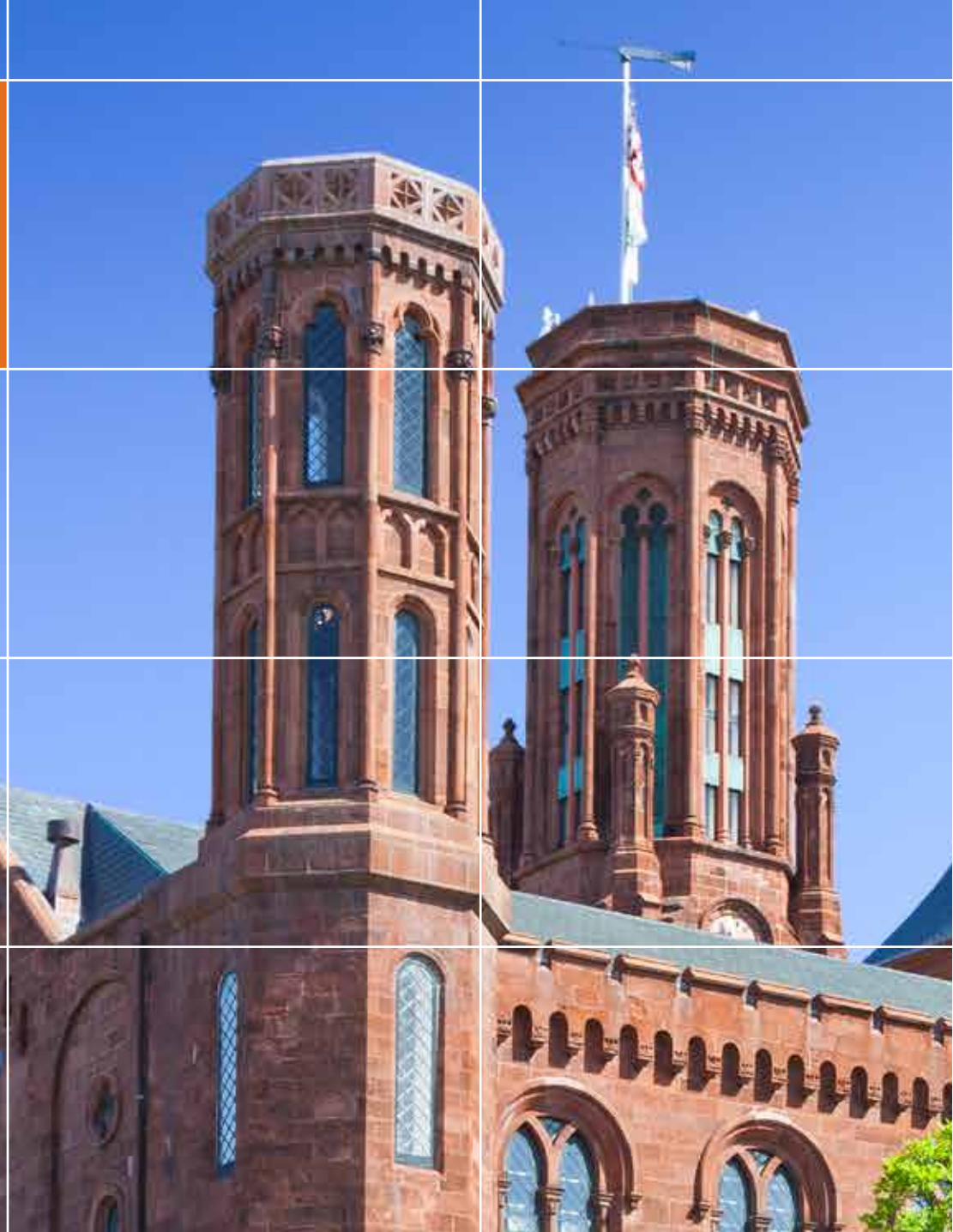
[worldstrides.com/smithsonian](http://worldstrides.com/smithsonian)  
1-800-422-2368

**Capstone**

*Intensive faculty-led journeys for university students*



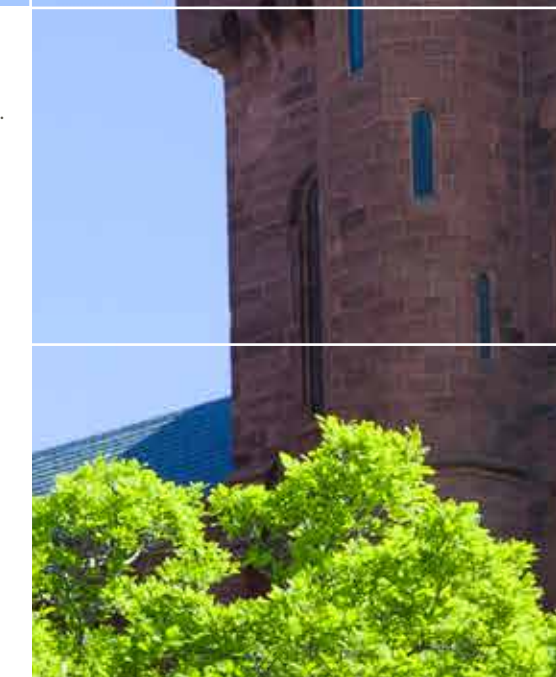
The Smithsonian Institution is **the** largest museum and research complex in the world, and then some.



**Extraordinary reach**  
The depth of the Smithsonian is almost beyond comprehension. *Almost*. Take a closer look and see. With millions upon millions of people depending on the Smithsonian to preserve history, advance science and spearhead new discoveries, the institution's impressive array of resources not only makes sense – it makes progress possible.

<b>\$1.2b endowment value</b>	<b>6,511 employees</b>
<b>19 museums and the National Zoo</b>	<b>854 research fellows</b>
<b>9 research centers</b>	<b>12,000+ volunteers</b>
<b>26.7m visitors</b>	<b>\$161m+ sponsored projects, grants and contracts</b>
<b>138.1m objects and specimens</b>	<b>2,100+ peer-reviewed research publications</b>
<b>2.1m library volumes</b>	

(2015 statistics)



The Smithsonian is **more** than a museum.

**A bastion of curiosity, always pushing forward**  
For more than 170 years, the Smithsonian has been guided by its founding commitment to the “increase and diffusion of knowledge.” Under this directive, its wealth of information and influence continues to grow every year, benefiting students, academics, researchers, historians and everyday people across the world by sharing a formidable bounty of assembled intelligence.



**Serving the world at large**  
The Smithsonian’s pathway toward the future is illuminated by four principles of American ingenuity.

- **Unlocking the mysteries of the universe**
- **Understanding and sustaining a bio-diverse planet**
- **Valuing world cultures**
- **Understanding the American experience**



These are not modest goals. But reaching for the “as yet unattained” is a hallmark of the Smithsonian’s psyche. That’s why the Smithsonian maintains a global network of multidisciplinary experts and state-of-the-art facilities. And it’s on a very large scale. Successfully exploring answers to big questions cannot be achieved by anything less than a cohesive front of thinkers and practitioners.





# Smithsonian University Travel Programs are an extension of everything the Smithsonian stands for, and everything your students endeavor to become

As a member of academia – professor or student – what could be more exciting than joining the Smithsonian on a quest to discover life’s most important topics? What better organization is there to tap into to see the world from every angle? What better collective of great minds is there to find new angles for comprehending our planet and ourselves?

Smithsonian University Travel Programs, a collaboration between the Smithsonian and WorldStrides, introduce you to the Smithsonian’s network of experts and facilities around the world!

### Curated, Yet Customizable

Each location is chosen for its ability to inspire critical thought and intellectual growth. Every suggested itinerary is designed with Smithsonian expertise, built to include visits that dive below the surface and include on-site guidance from passionate specialists. The itineraries you’ll see in the pages that follow are designed for faculty to take and make their own, with customization to match your curriculum.

### Expert Access

Scientists. Historians. Preservationists. Craftsmen. Researchers. These are the experts who bring you up to speed on what’s happening in their discipline right now. Whether it’s a fine art restorer at the Fortezza del Basso or a rainforest entomologist in Panama, you’re connected to incredibly passionate, knowledgeable minds.

### Hands-On

Don’t just see. Or listen. You’re here to join the investigation. That’s why our suggested activities zero-in on the details. It’s not enough to just visit a glacier in Iceland, for example. You’re a part of the team when you grab some equipment and help out with water samples and analysis.



P4. Costa Rica: Research in the Rainforest



P5. Panama: Exploring the Tropics



P6. Iceland: A Geologic and Environmental Wonder

See for yourself when you thumb through our recommended itineraries...

## Costa Rica: Research in the Rainforest

See why this pristine tropical ecosystem is the world’s model for environmental sustainability.



**Recommended trip length:** 7 days

**Places visited:** Sarapiquí, Arenal, Guanacaste

**Areas of study:** Biology, Ecology, Forest Ecology, Ornithology, Volcanology



### Curated Itinerary Overview

#### Days 1-3 | Arrival and Sarapiquí Biological Station

- **Expert Access: Organization for Tropical Studies**  
Learn about the research, outreach, and mission of the Organization for Tropical Studies at a private meeting at the University of Costa Rica.
- **Spotlight: La Selva Biological Station**  
2-day immersion into the active research that is taking place at the largest field station of the Organization for Tropical Studies. Eat, sleep and work alongside researchers during your stay.
- **Expert Access: Bat Population Monitoring Project**  
Go into the field to collect bats before completing a survey and capturing data about the population.
- **Expert Access: Bird Survey**  
Join a naturalist to identify basic bird physical characteristics and behaviors, improving your bird watching skills as you explore the vast trail network.
- **Special Access: La Selva Climate Change Field Project**  
Visit the on-site weather station, take part in an active research project collecting data, analyzing results and recording findings.

#### Day 4 | Arenal

- **Spotlight: Arenal Volcano**  
Hike the lava fields of this 4,000-year-old volcano and learn how plants and animals have become reestablished after volcanic activity.

#### Days 5-7 | Guanacaste Biological Station and Departure

- **Spotlight: Palo Verde Biological Station**  
Spend 1.5 days touring the station, highlighting research projects underway in this gem of dry rainforest in Central America. Eat and sleep at the biological station!
- **Special Access: Hands-On Field Research**  
Explore the park with a naturalist, and spend the morning participating in a research project.

View more itinerary information at [worldstrides.com/smithsonian/costarica](http://worldstrides.com/smithsonian/costarica)

### Other opportunities:

- Spotlight: National Park Service**  
Participate in a morning volunteering project in a world-famous national park.
- Spotlight: Sun and Surf**  
Relax on the beach, take part in optional water sports and explore the unique culture that is the Costa Rican Pacific Coast.
- Spotlight: Rincon de la Vieja**  
Experience Costa Rican adventure at it’s finest. Opt to do a canopy tour, horseback riding, tubing, a mud bath or all activities!
- Special Access: La Cruces Biological Station**  
Spend additional days at Las Cruces Biological Station or opt to visit this station instead of La Selva or Palo Verde.

# Panama: Exploring the Tropics

Located in an area of intensive biodiversity are scientific secrets waiting to be told.

**Recommended trip length:** 6 days

**Places visited:** Panama City, Smithsonian Tropical Research Institute centers, Chagres National Park

**Areas of study:** Anthropology, Biology, Botany, Ecology, Evolution, Forestation, Herpetology, Marine Biology



Customize your itinerary! Contact us by phone or email and we'll start designing your program together.

800-422-2368

## Curated Itinerary Overview

### Day 1 | Arrival and Panama City

- Casco Viejo, Paseo de las Bovedas, Plaza de la Independencia, Cathedral, Palacio Municipal, San Jose Church, Golden Altar, Arco Chato, Convento de Santo Domingo, Plaza de Francia, Plaza Bolivar, Miraflores Locks Visitors Center

### Day 2 | Smithsonian Tropical Research Institute (STRI)

- **Special Access: STRI, Barro Colorado Research Center**  
Tropical rainforest trek with a STRI docent includes current research project overview and lunch with an assembled team of STRI residents.
- **Special Access: STRI, Gamboa Research Center**  
Discuss the work of this research facility, including the Amphibian Conservation Center and ongoing work with bio domes. (STRI docents will focus on your specific interests and highlight their frog, butterfly, and/or bat research.)

### Day 3 | Chagres National Park

- **Spotlight: Embrera Indian Village**  
Travel upriver by dugout canoe to Chagres National Park. Study medicinal plants of the area and join an indigenous community to learn customs in music, dancing and food.

### Day 4 | Galeta Research Facility

- **Special Access: STRI, Galeta Research Facility**  
Meet with Galeta staff to learn more about the work being done on the Caribbean side of Panama, particularly in Marine biology, and about the outreach efforts of this educational center. Discuss threats to ecosystem and remediation.  
*Optional: Participate in a service project.*

### Day 5 | Panama City

- **Special Access: STRI, Punta Culebra Education Facility**  
Visit this front-lines education facility for Smithsonian. Learn about research conducted here and outreach to local classrooms.

### Day 6 | Panama City and Departure

Explore the capital city for a free day of touring before leaving for home.

View more itinerary information at [worldstrides.com/smithsonian/panama](http://worldstrides.com/smithsonian/panama)

#### Other opportunities:

##### Bocas del Toro

See Bastimentos Marine National Park to learn about protection of coral reefs and sea turtles, visit Red Frog Beach Island, and STRI Bocas Marine Station on a multi-day visit focused on marine research.

##### Special Access: STRI, Metropolitan National Park Canopy Crane

Learn about the history of canopy research and how STRI pioneered the use of cranes. Interact with docents to learn about in-situ studies.

# Iceland: A Geologic and Environmental Wonder

Discover how innovation and natural resources led a country to flourish in a land of fire and ice.

**Recommended trip length:** 8 days

**Places visited:** Reykjavik, South Coast, Hvolsvollur

**Areas of study:** Geomorphology, Geothermal Energy, Glaciology, Horticulture, Hydrology, Pedology, Renewable Energy



## Curated Itinerary Overview

### Days 1-2 | Arrival and Reykjavik

- Lava field horse ride
- **Spotlight: Fish Farm**  
Discuss the role of aquaculture, and its relationship to commercial fishing, in Iceland.
- **Spotlight: Geothermal Energy Exhibition at Reykjanesvirkjun Power Plant**  
Explore the geothermal energy process on a private tour that details the technical and sociological thinking behind clean, sustainable energy.

### Day 3 | South Coast

- Black-sand beach, Skogafoss and Seljalandsfoss waterfalls
- **Expert Access: Reykjanes Peninsula**  
Meet an arctic research scientist to learn about the latest eruption here and active research taking place in Iceland. Assist with fieldwork and physical volcanology.
- **Spotlight: Solheimajokull Glacier**  
Walk on the glacier and participate in research by taking measurements and ice samples for analysis.

### Day 4 | Hvolsvollur

- **Spotlight: Geothermal Park**  
Participate in research measuring the water temperatures. Compare the site to the nearby site used before the 2008 earthquake.
- **Spotlight: Caving**  
Examine geological strata beneath the ground.

### Day 5-8 | Reykjavik and Departure

- Thingvellir National Park, Gulfoss, Geysir, Hverageroi geothermal field, Keldur, Hellsheidi Power Plant
- **Spotlight: Soil Conservation Service**  
Investigate characteristics of erosion from human impact and deforestation with a team of researchers.
- **Spotlight: Green Energy**  
Visit a greenhouse to learn how technical advances in renewable energy positively impact horticulture.
- **Expert Access: Geothermal Power Plant**  
Study the science behind harnessing geothermal energy from a power plant representative.
- **Spotlight: Blue Lagoon**  
Soak in the famous, warm and mineral-rich pools amid a large lava field.

View more itinerary information at [worldstrides.com/smithsonian/iceland](http://worldstrides.com/smithsonian/iceland)

#### Other opportunities:

##### Special Access: Whale Watch

Search for wildlife inhabiting the waters off the coast of Iceland (seasonal).



# Program support from WorldStrides, a global leader in educational travel

Smithsonian University Travel Programs are created in collaboration with WorldStrides, the largest and most trusted student travel company in the country.

For 50 years, WorldStrides has delivered enriching and powerful opportunities for students of all ages to discover new destinations across the globe.

The safety and security of all travelers is always the foremost priority of every WorldStrides program, allowing Smithsonian University Travel Programs to provide industry-leading assurances, including:

- **Tour Central** – a 24/7, “always there” communications team, trained to handle emergencies large and small.
- **Doctors on Call** – round-the-clock access to U.S.-based doctors through George Washington University’s Department of Emergency Medicine.
- **USTOA Travelers Assistance Program** – protects your advance deposits and hedges international currencies to minimize financial exposure.
- **The largest liability coverage available, plus embedded medical, evacuation and repatriation insurance for each traveler.**

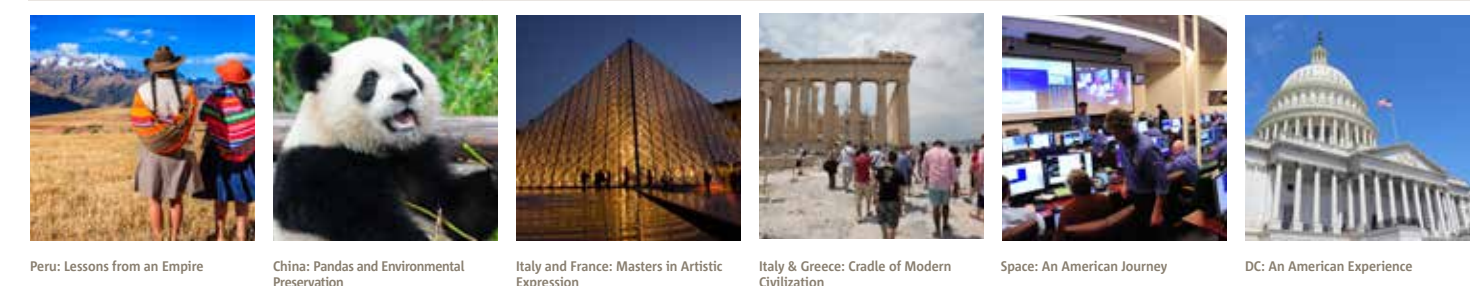
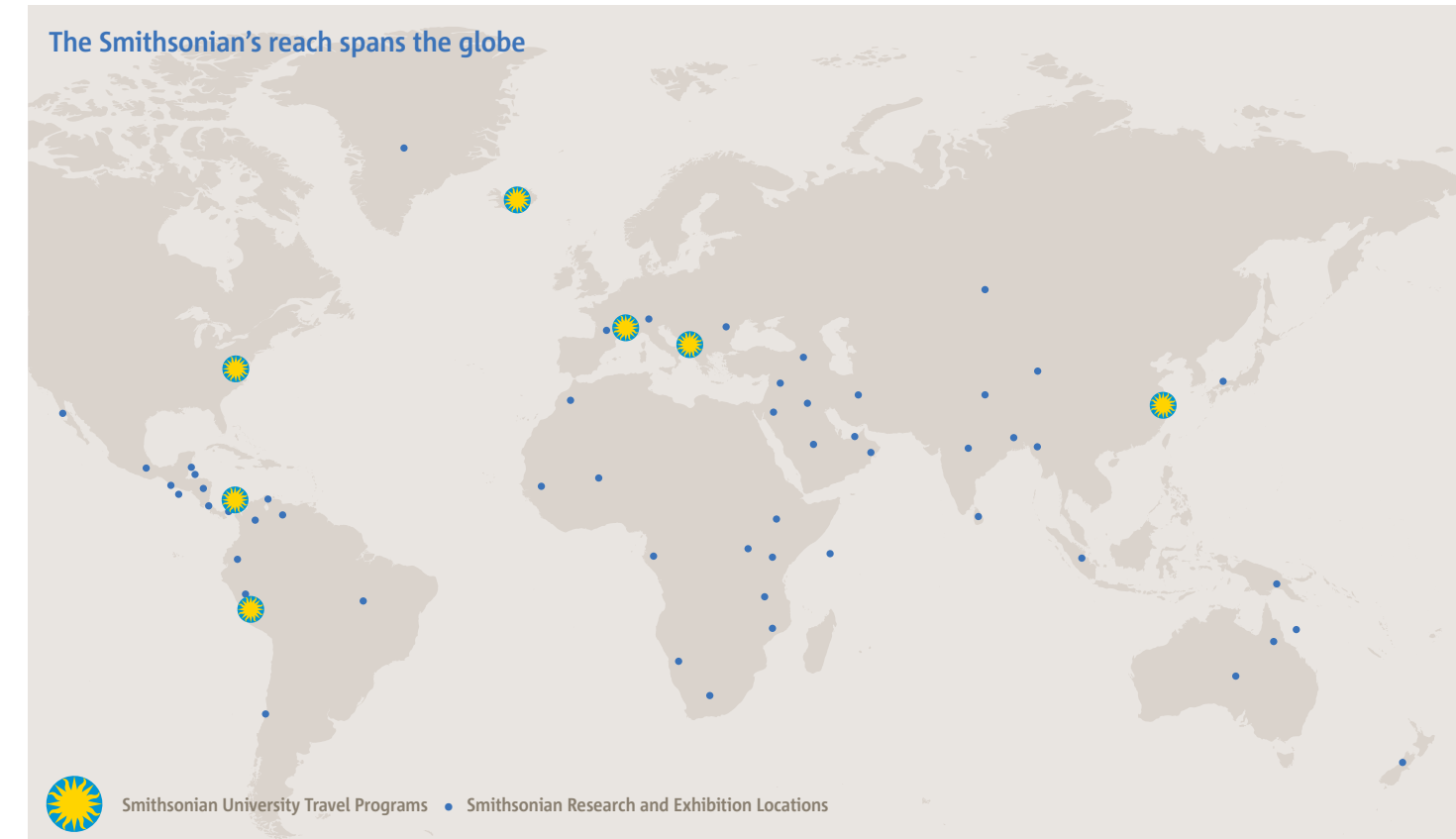


The Smithsonian and WorldStrides share a strong passion for education. With this in mind, WorldStrides offers **financial aid and scholarships** to deserving students so they can explore the world on Smithsonian University Travel programs. **College credit** is also available to those who want to include scholastic goals with their travels.



# Tap into Smithsonian resources and customize your program

Craft an itinerary perfectly suited for your students and your curriculum with WorldStrides' team of professional academic travel planners and Smithsonian's network of global resources at your service. The map below indicates other curated itineraries available from Smithsonian University Travel Programs.



**Experiences define who we are. And redefine what is possible.** The WorldStrides-Smithsonian Institution collaboration offers a unique learning opportunity for students with access to world-class research and scholarly experts, made available within the context of rich travel opportunities. Together we hope to feed the minds and shape the perspectives of a new generation of learners, thinkers, and doers.



Jim Hall  
Chief Executive Officer, WorldStrides



Christopher Liedel  
President, Smithsonian Enterprises



*Learn more about Smithsonian University Travel Programs.  
Call 1-800-422-2368!*



[worldstrides.com/smithsonian](http://worldstrides.com/smithsonian)  
1-800-422-2368

The name of the Smithsonian Institution and the sunburst are registered trademarks of the Smithsonian Institution and WorldStrides is an authorized user.